

Version 6.1 Update Pack 3 Release Notes

General Notes:

There is a new procedure for installing IPV Spectreview on servers running the 64 bit version of Server 2003. Please call for instructions.

FlipFactory can now be installed on Windows Server 2003 32- and 64-bit versions and Windows Server 2008 32- and 64-bit versions.

To install FlipFactory on a Windows Server 2003 32-bit system, please follow the current installation instructions in the User Guide.

To install FlipFactory on Windows Server 2003 64-bit system, please follow the current instructions in the User Guide and **also** the instructions at the end of these release notes.

To install FlipFactory on Windows Server 2008 32- or 64-bit version, please review the guidelines at the end of these release notes in conjunction with the current installation instructions in the User Guide.

There are known issues and limitations with running FlipFactory on Server 2008. Please see the Known Issues section at the end of these Release Notes.

New Features

ITU Loudness Measurement and Adjustment Operational improvements to this optional feature that uses the algorithms in ITU 1770 to measure and adjust loudness. Please see Application Note on our web site for details.

Avid Send to Playback Optional feature that adds the ability to send a file directly from an Avid editor to FlipFactory. File preserves Time Code, handles 8 audio channels and preserves the MOBID of the file in the filename.

Brightcove Destination Added a new destination for Brightcove, an on-demand online video platform.

DPX Audio support Extended support to multiple AIFF files with DPX sources.

Encoder Optimizations Speed improvements when writing to network stores for Avid Transfer Manager, the DVD Encoder, and the Liquid Encoder.

HD VANC Preservation and Insertion Added ability to preserve and insert VANC data in specific decoders and encoders. Please see the HD VANC Compatibility chart on our web site.

MP3 Encoder Added ID3v2 tags.

Playback Trim Added the ability to reference the actual start of media time code as opposed to the current capability which forces the reference to start at time code 00:00:00:00

ProRes Decoder Increase audio channel support to 32 channels of audio.

SAN Monitor New monitor to improve workflows in FactoryArray installations.

SDK Update Added ability to pass multiple in and out points through the SDK for trimming clips.

VOD Encoder Extended capabilities for presenting PMT PID values and PCR interval settings.

Windows Media Encoder Added closed caption and time code options to Windows Media VBR files.

XDCAM EX Added support for decoding XDCAM EX files.

TrafficManager

DG Monitor Increased the robustness of the DG Monitor in cases where the network connectivity between the monitor and the DG server is poor.

Extreme Reach Monitor Added support for automatically monitoring and retrieving files from Extreme Reach spot delivery service.

Bug Fixes

Extremely long DPX sequences now function properly.

Dublist monitor properly handles priority settings.

Corrected issues encountered when direct converting DNxHD files.

Resolved time code issues with the GXF Decoder. Resolved DV issue with the GXF Encoder.

Resolved issues with key frames when non-standard frame sizes were used.

Corrected LXF DV file aspect ratio issue so that 16x9 is properly handled.

Multiple corrections to the MPEG2 decoders including handling of large Program or Transport Stream files

Corrections to the On the Spot Monitor.

Resolved issue with improper interlacing of Spectreview MPEG1 files.

Modified the generated store directories to reduce the path length for files with long file names to avoid problems with the Windows 255 character file path limit.

Known Issues

The ftp monitor contains a check box for "Submit Immediately". This check box is non functional.

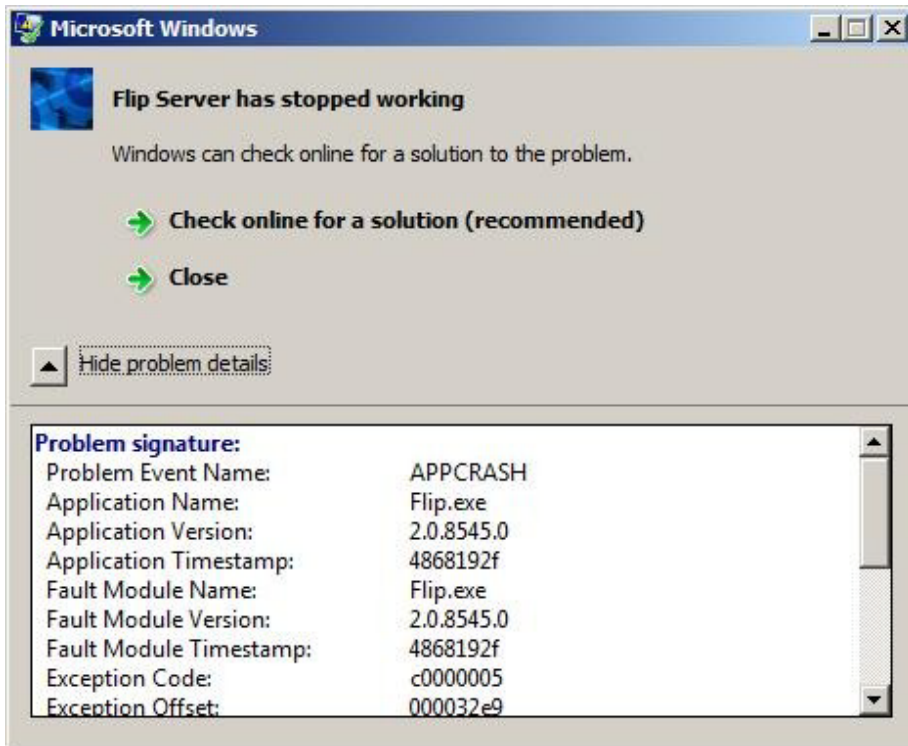
QuickTime Streaming Decoder cannot decode certain files.

The RenameSQL2005DB script is not working on Server 2008.

The Profile XP MAN software does not work with Server 2008.

Avid does not support the transfer client on Windows Server 2008.

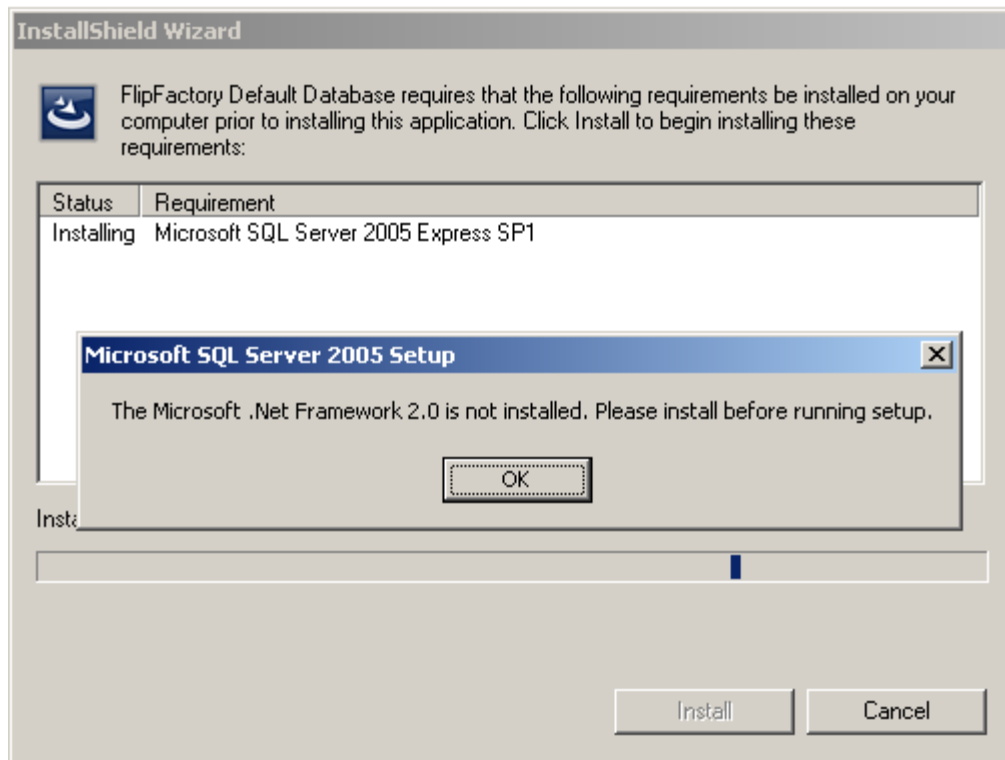
When restarting the FlipEngine service on a Windows Server 2008 machine running FlipFactory you may get the following error message:



This is cosmetic only and does not affect the operation of FlipFactory.

Installing FlipFactory 6.1 on a Windows Server 2003 64 bit Machine

Follow the instructions for installing FlipFactory on a standard Windows server 2003. During the installation of Microsoft SQL Server you may get the following error message.



Please install the Net Framework 2.0 x64 from the following location:

<http://www.microsoft.com/downloads/details.aspx?FamilyID=B44A0000-ACF8-4FA1-AFFB-40E78D788B00&displaylang=en>

Continue with the installation.

Guidelines for Installing FlipFactory 6.1 on Windows Server 2008

Prior to installing FlipFactory, the “Desktop Experience” must be installed under features in the Server Manager.

From the same menu, “Telnet Client” and “Telnet Server” may also be installed as optional features.

It is recommended that the FlipFactory application be installed by right-clicking the installation file and selecting “Run as Administrator”.

It is also recommended that Windows Firewall be disabled so that FlipFactory can communicate with networked drives.

Although set by default on the standard distribution of Server 2008, ensure that the “Computer Browser” service is enabled.